

2011 Census  
Inner West

# Background

- The Census is completed every 10 years and is the largest piece of social research undertaken in the country
- It captures the defining characteristics of the population:
  - § Who we are
  - § How we live
  - § What we do
- The last Census took place on 27 March 2011

# Why the Census matters

- It provides a basis for allocating and targeting resources
- It helps build a picture of our society and provides valuable information on the make-up of local communities
- The equality and diversity data it provides helps assess the extent of inequalities
- It provides a basis on which to plan services such as housing, education, employment, health and transport for years to come
- It provides the sampling frame for research across the public and private sectors

# Was it a successful Census?

- For the first time, ONS worked closely with local authorities and the community and voluntary sector in the lead-up to the Census
- Particular efforts were made to reach “hard to count” groups of people
- ONS achieved their target response rate of 94% in England and Wales and at least 80% in every local authority area
- In Leeds, the response rate was 94% which is higher than the 91% achieved in 2001

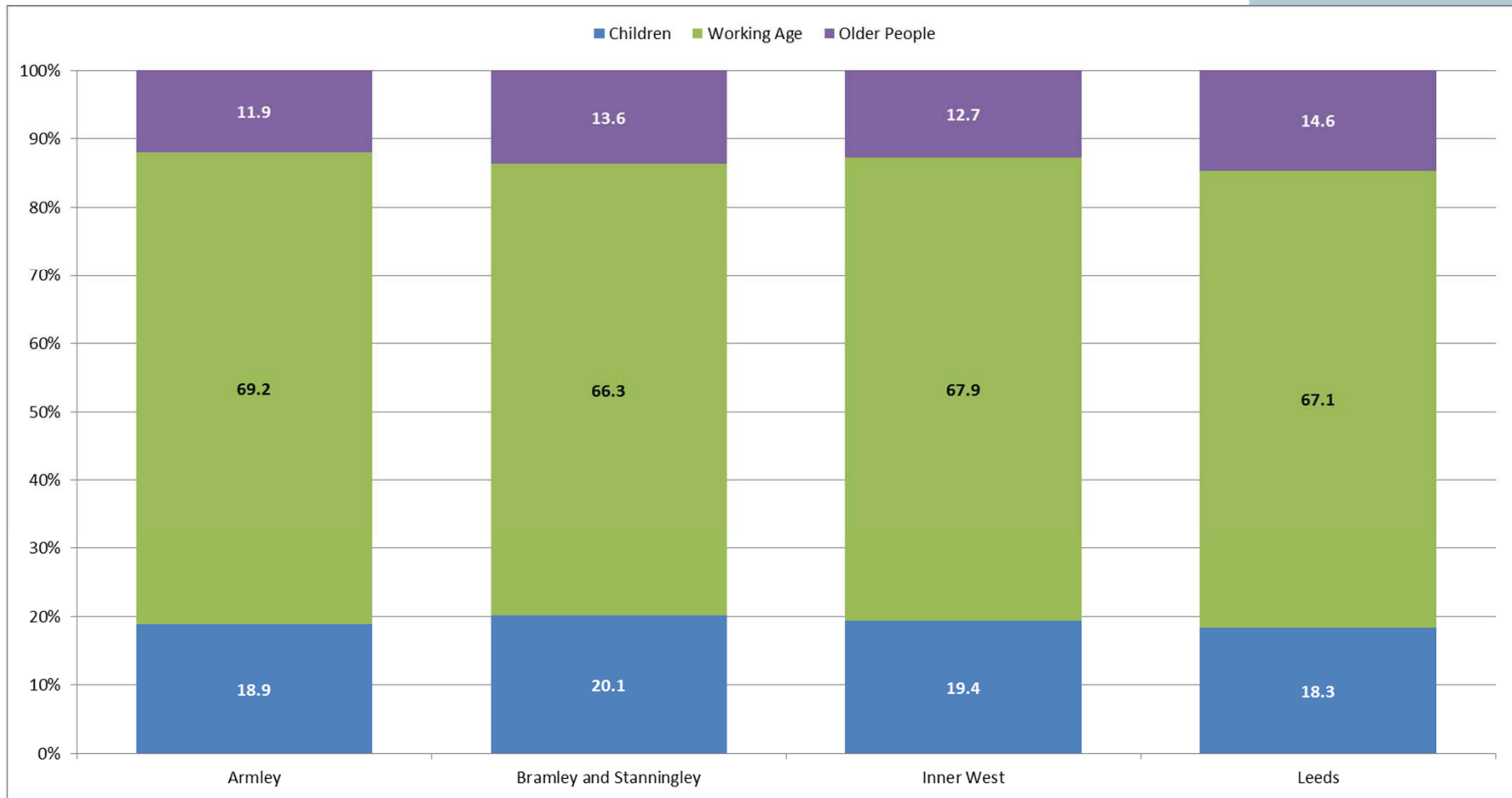
# What does the Census tell us

The Census provides a vast amount of data covering aspects such as:

- Population by age and gender
- Ethnicity and nationality
- Religion
- Housing stock and tenure
- Household compositions
- Economic activity
- Car ownership
- Qualification levels
- General health and limiting long term illness
- Provision of unpaid care

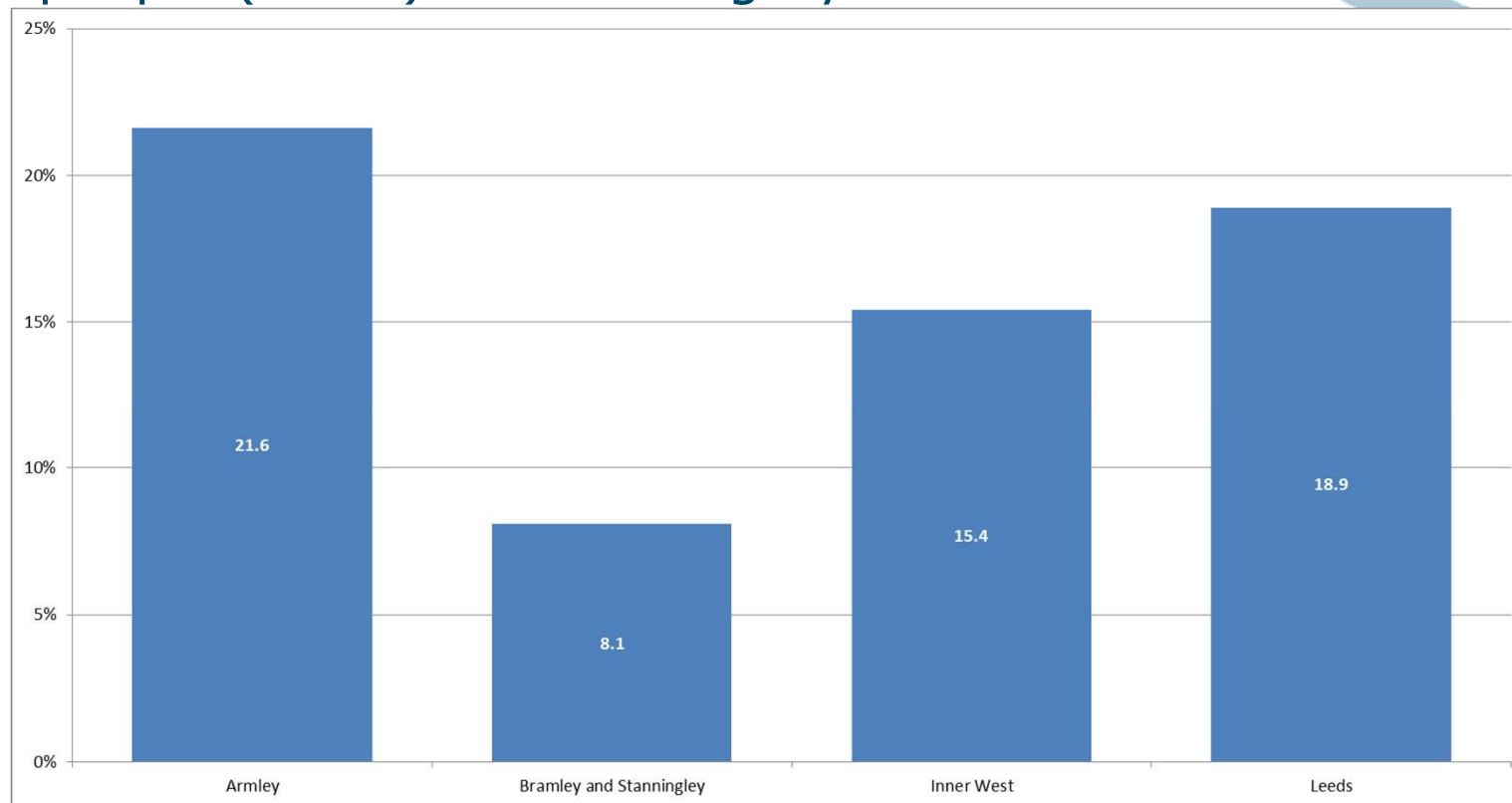
# Inner West: Population

There are 46,884 people in the area



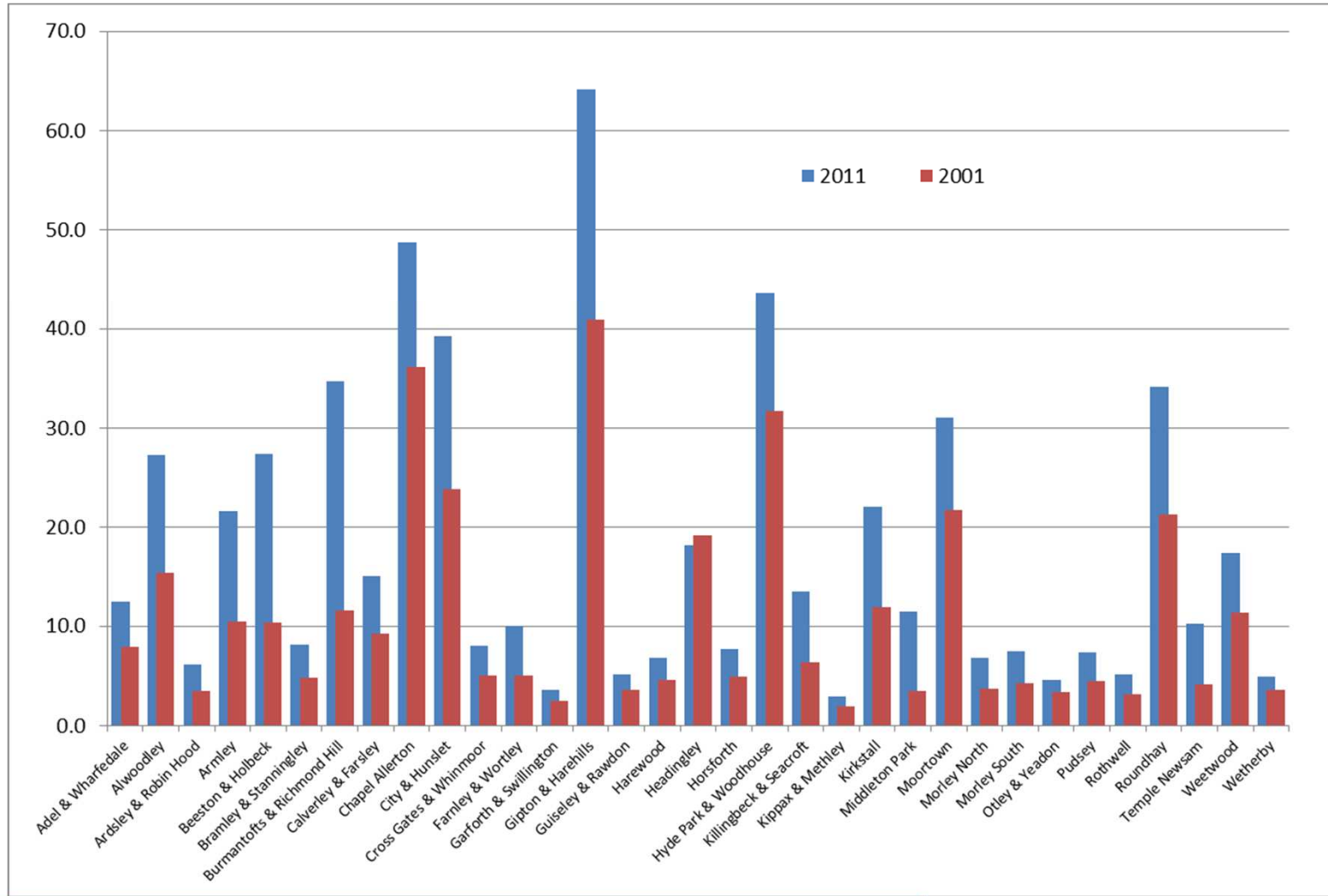
# Inner West: Black & Minority Ethnic population

15.4% of the population are from BME communities, the Pakistani community is the largest "single" BME group (2.3%), but there are 2,034 people (4.3%) in the category of "Other White"





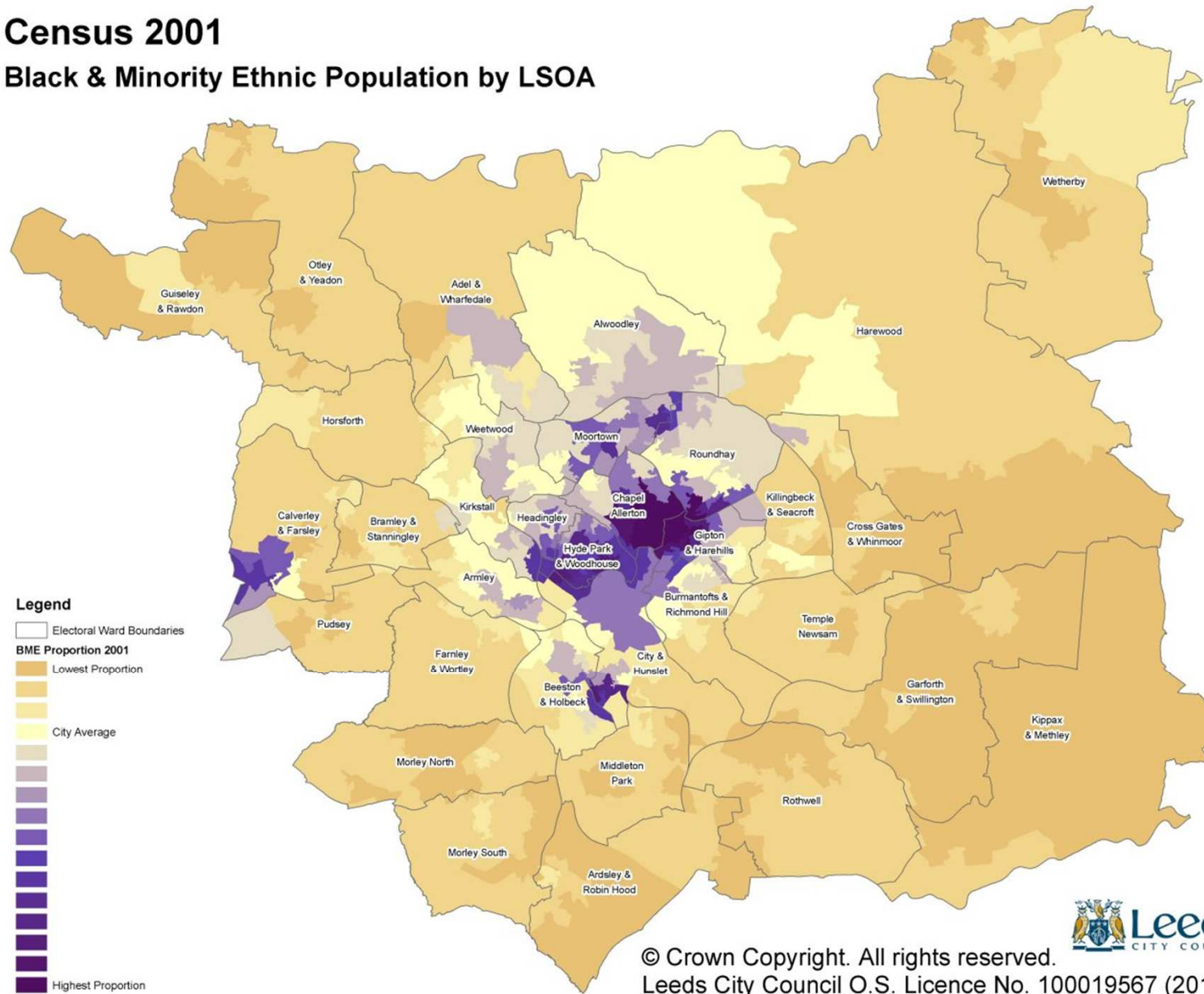
# BME population by ward 2001-2011





# Census 2001

## Black & Minority Ethnic Population by LSOA

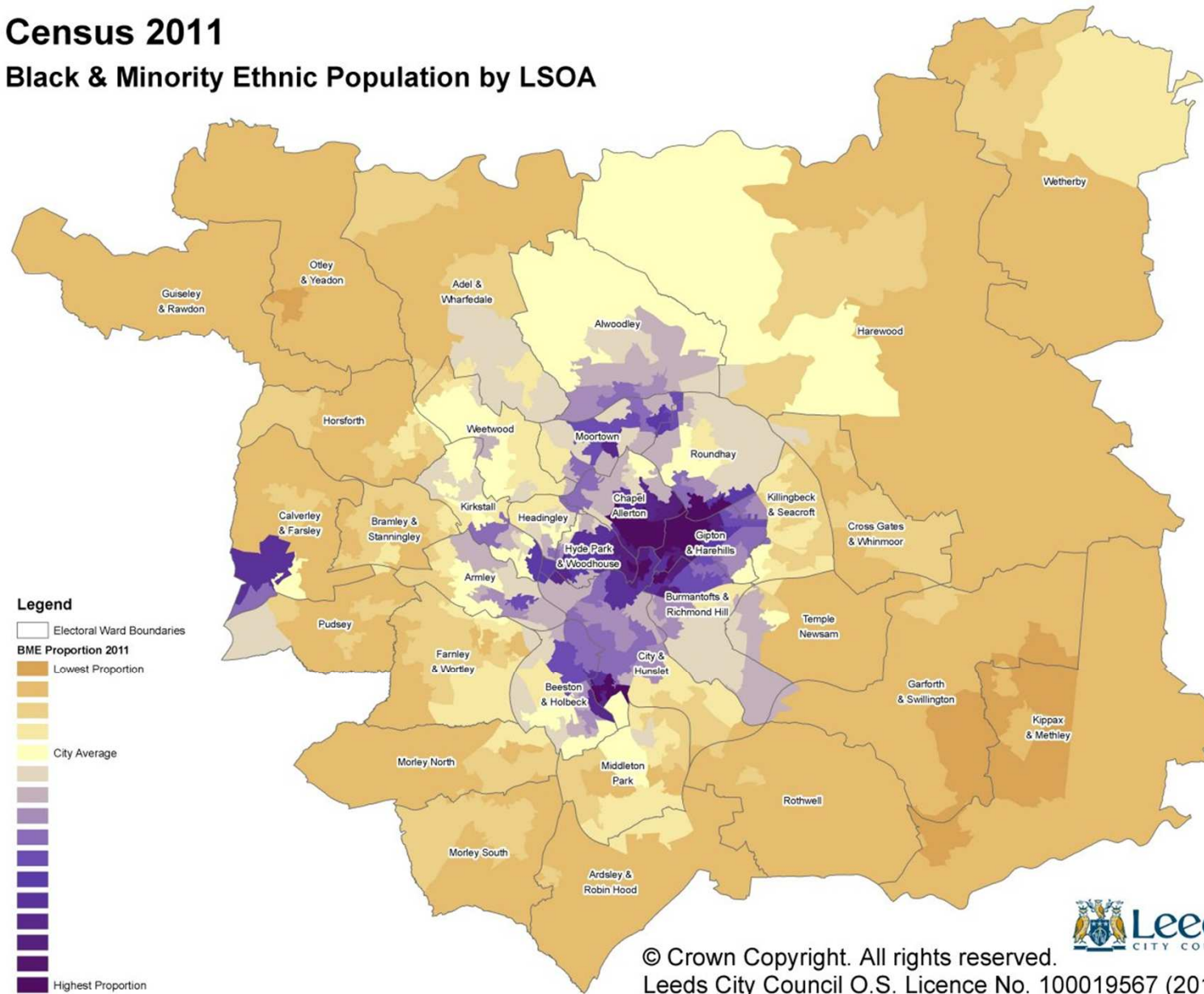


© Crown Copyright. All rights reserved.  
Leeds City Council O.S. Licence No. 100019567 (2013)



# Census 2011

## Black & Minority Ethnic Population by LSOA



© Crown Copyright. All rights reserved.  
Leeds City Council O.S. Licence No. 100019567 (2013)



# Inner West: International immigration

- There are just over 86,000 people living in Leeds who were not born in the UK, with more than half arriving between 2001 and 2011 (49,340 people)
- Almost 3,000 of the “new migrants” have settled in the Inner North West, accounting for 6.3% of the total population

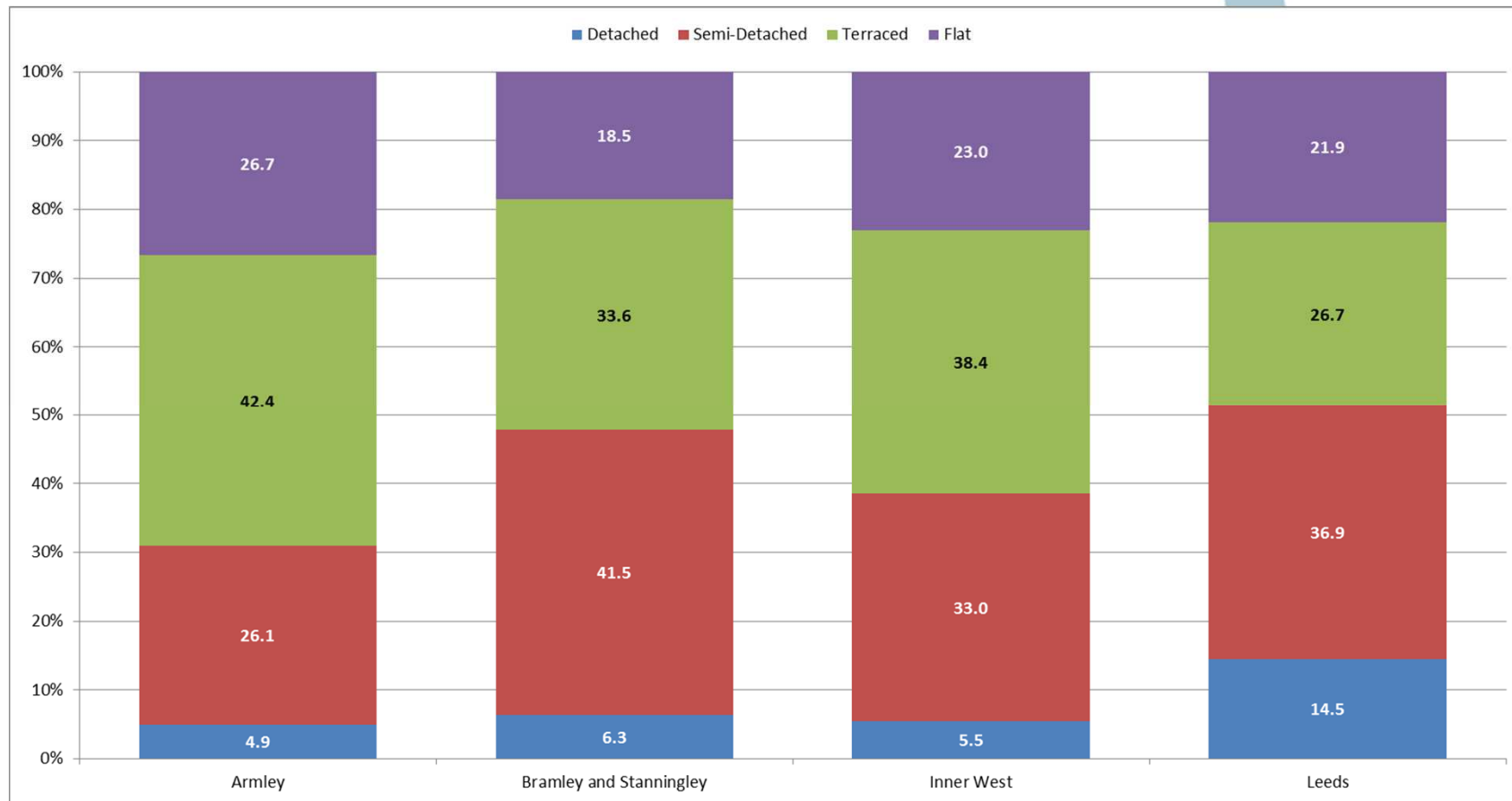
§ Armley	2,344
§ Bramley & Stanningley	632

# Inner West: Religion

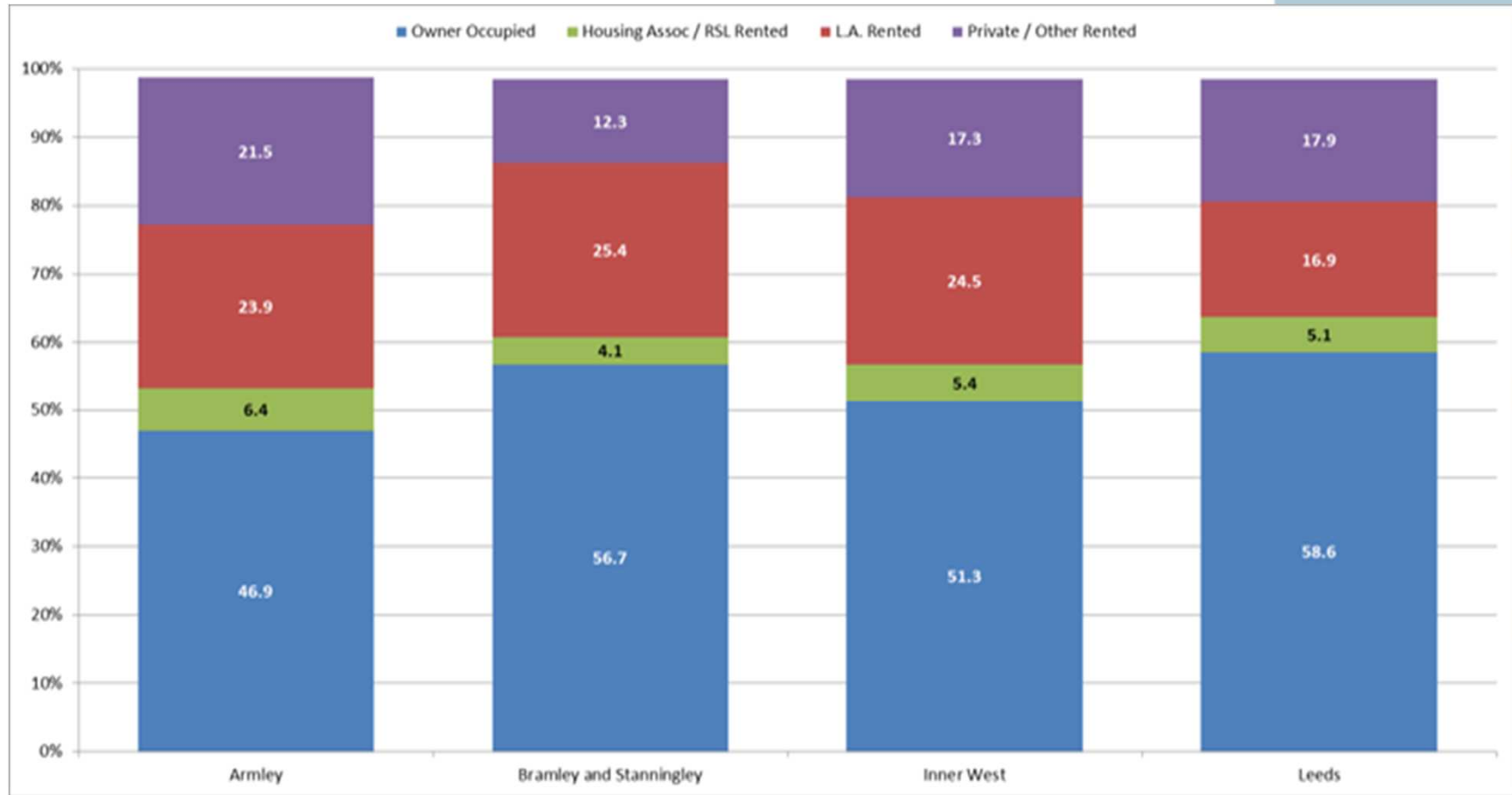
	Number	%	Leeds MD %
Buddhist	162	0.3	0.4
Christian	25,066	53.5	55.9
Hindu	237	0.5	0.9
Jewish	61	0.1	0.9
Muslim	1,674	3.6	5.4
Sikh	311	0.7	1.2
Other Religion	172	0.4	0.3
No religion	16,094	34.3	28.2
Religion Not Stated	3,107	6.6	6.7

# Inner West: Housing Stock

There are 21,041 occupied households in the area



# Inner West: Housing Tenure



# Inner West: Changes in Housing Tenure 2001-2011

	2001	2011
Owner-occupied	56.1%	51.3%
Rented	43.9%	47.2%
Renting from local authority	28.4%	24.5%
Other social rented	4.9%	5.4%
Renting from private landlord / letting agency	6.9%	16.0%
Other	3.8%	1.3%
Living rent free	N/A	1.4%

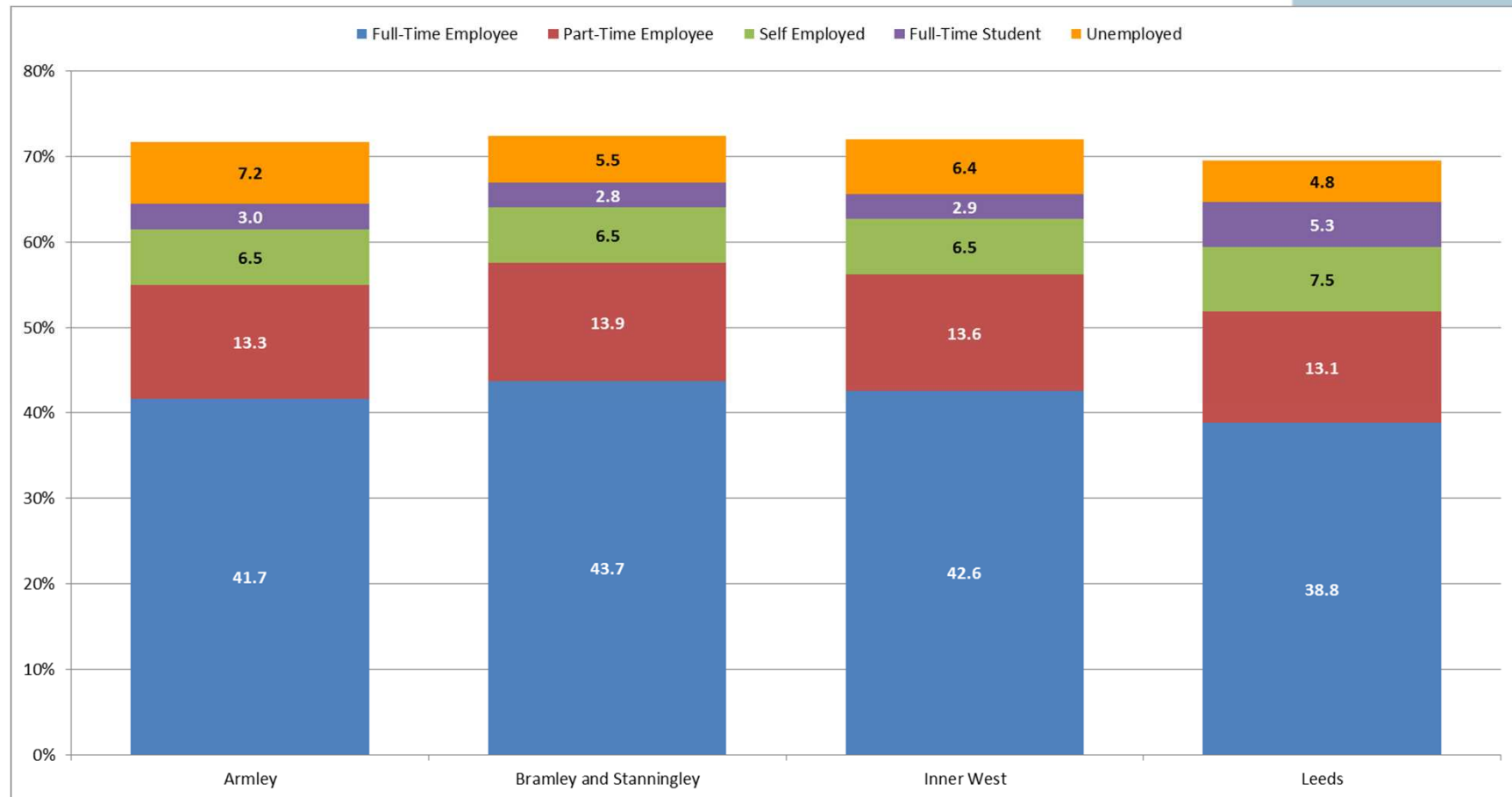


# Inner West: Household compositions

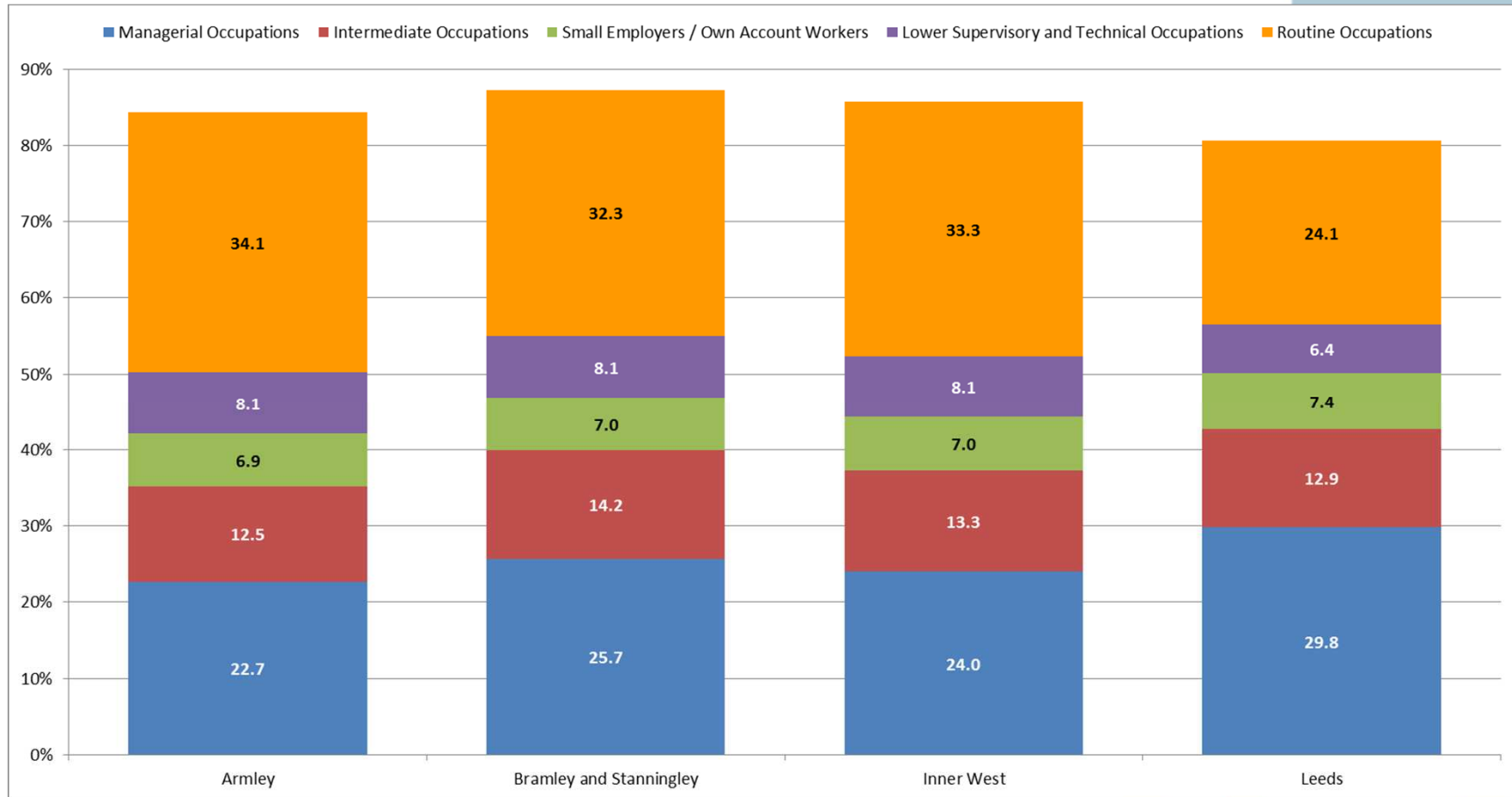
Of the 21,041 households in the area:

- 36.6% are people living on their own (city average 33.3%)
- 16.1% consist of pensioners only (including 2,335 lone pensioners)
- 28.1% contain dependent children (city average 27.6%)
- 9.5% of households are lone parents with dependent children (city average 7.6%)

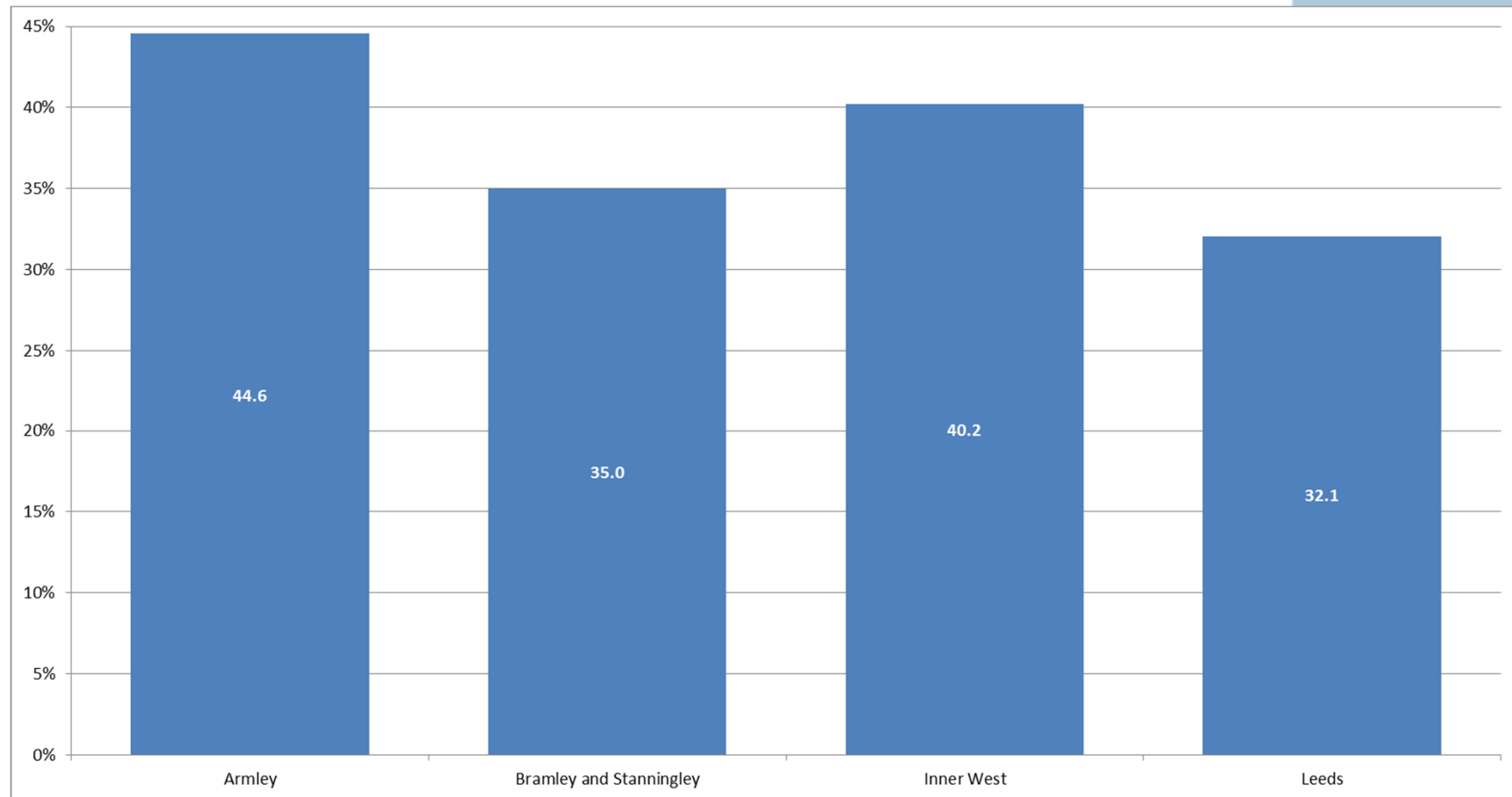
# Inner West: Economically Active population



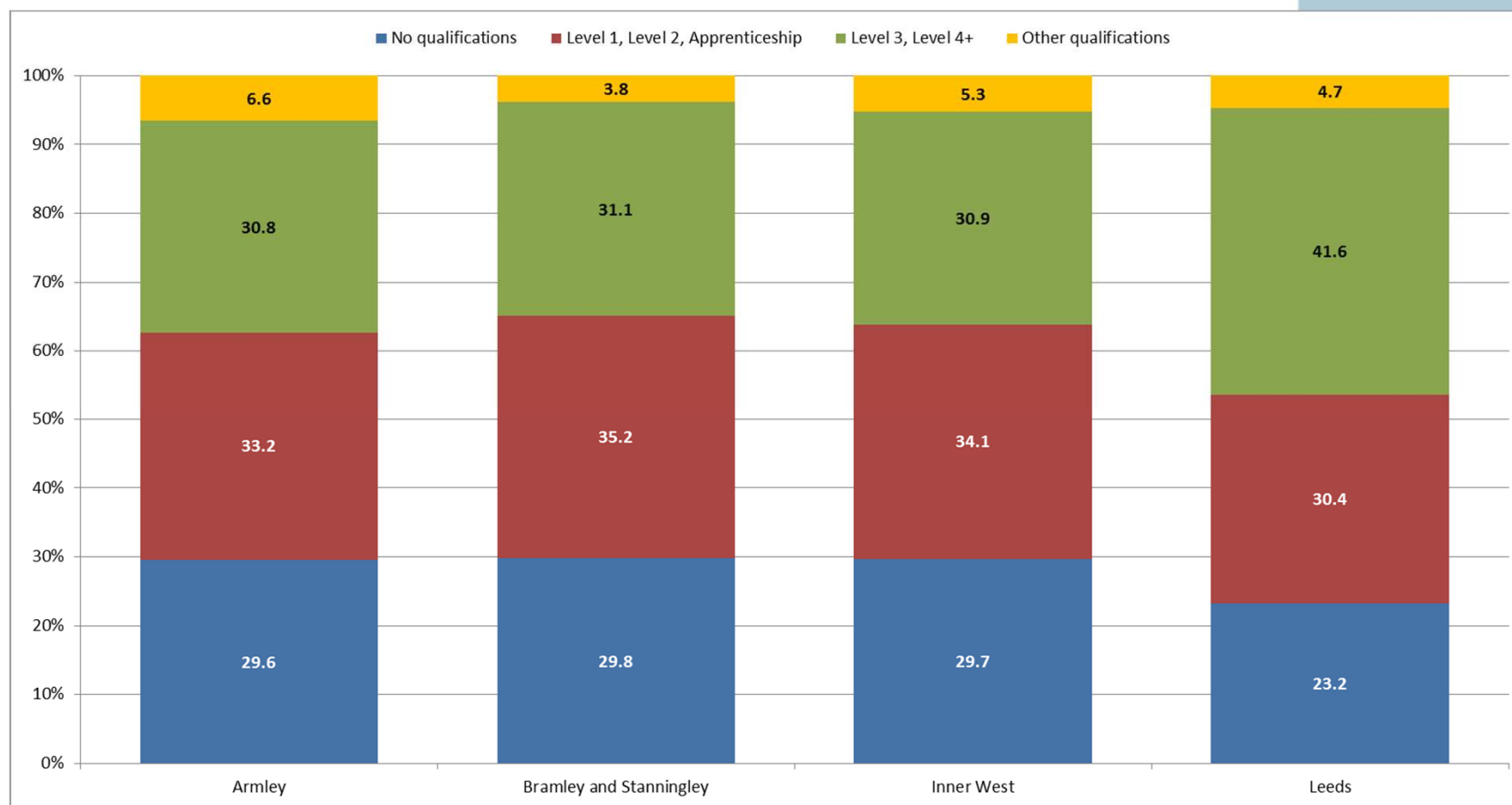
# Inner West: National Statistics Socio-Economic classification



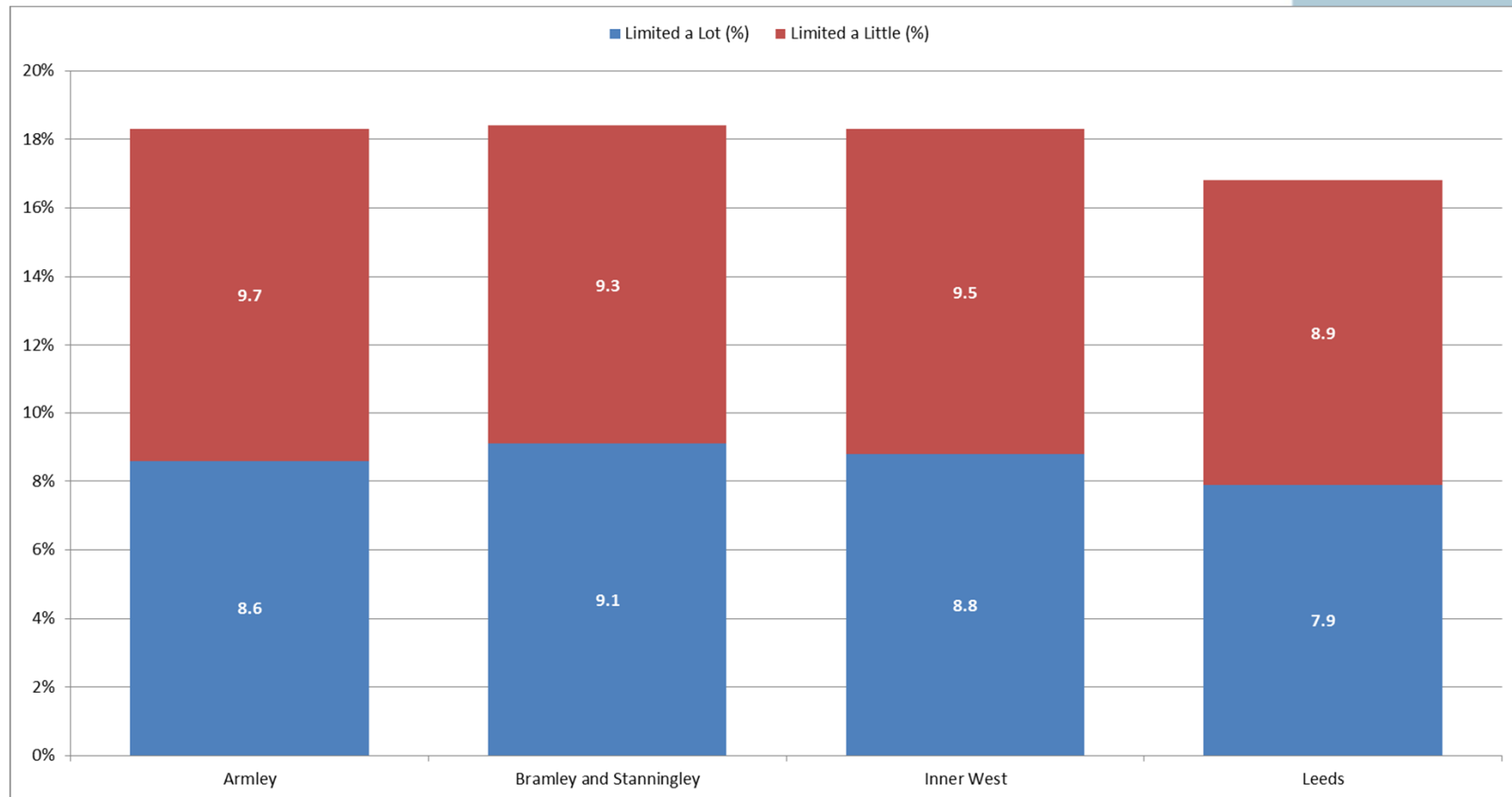
# Inner West: Households with no access to a car or van



# Inner West: Highest level of qualification



# Inner West: Limiting Long-Term Illness



## Inner West: Provision of unpaid care

	Number of people providing unpaid care	People providing 50+ hours of unpaid care per week
Armley	2,140	551
Bramley & Stanningley	1,958	519
Inner West	4,098	1,070



# Census analysis

To date the Intelligence and Improvement Team has published:

- Leeds – The Big Picture
- 33 individual ward profiles and 10 Area Committee profiles
- Area comparison –summary report
- Thematic analysis
  - § BME ward comparisons
  - § Faith ward comparisons

Work is underway to produce additional thematic reports

# Emerging Implications

- A growing and ageing population will have an impact on the need for services such as health and social care, school places, employment, skills, and housing
- An improved understanding of the local labour market and the supply of skills compared to the demand
- Establishes a new baseline for much of the city's equality and diversity data
- An increasingly diverse population also presents a challenge for future services

# Future Releases/Next Steps

- First batch of “cross-tabulated” data to be released by ONS in stages between March and June
- Final batch of more detailed data to be released in stages between July and October
- We will be undertaking a full review of the cross tabulated data relating to ethnicity and faith
- We will be liaising with colleagues across directorates